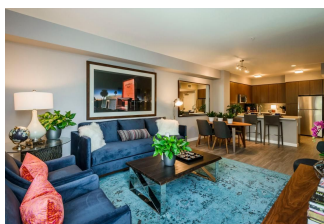


DOWNTOWN SAN JOSE GETS MORE HOUSING AND COLORFUL LIGHT SCULPTURE

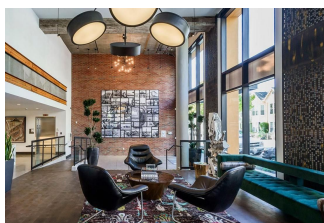
Feb 15, 2017 | Julie Littman, Bay Area, Bisnow 



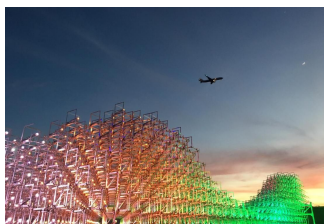
Sares Regis Group of Northern California opened its newest housing development in **Downtown San Jose** last week. **The Pierce**, a 232-unit \$88M mid-rise complex at 2 Pierce Ave., includes 4,300 SF of ground-floor retail. The site is in the emerging South First Area district (SoFA), San Jose's visual arts and entertainment area.



Apartments are available for immediate move-in. As of Feb. 9, 82 units had been leased, of which 62 were occupied. Rents start at \$2,200. The Pierce offers studios, one- and two-bedroom apartments and two-bedroom, two-bath townhouses.



Amenities include a swimming pool, an art gallery reception lobby, a high-speed WiFi café, a fitness center, an outdoor kitchen, a club room, a screening room, a bike shop, landscaped gardens, a roof terrace, a dog wash, and a two-story garage with 323 spaces. The Pierce is targeting LEED Silver certification.



The Pierce's roof features the "Voxel Cloud," an art installation of LED lights by Brian Bush sponsored by the developer and San Jose's Office of Cultural Affairs' Public Art department. The installation is visible from I-280 and provides a gateway into the SoFA district.

SRGNC partnered with **Pritzker Realty Group** for this project, which was designed by **Steinberg Architects**. Other companies involved include general contractor **Clark Builders Group**, HMH Civil Engineers, The Guzzardo Partnership Landscape Architects, MEP engineer Belden Inc. and structural engineer Nishkian Menninger.

See Also: [Bay Area Expected To Peak In 2017, Time To Sell, Expert Says](#)

Related Topics: [Pritzker Realty Group](#), [The Pierce](#), [Downtown San Jose](#), [Sares Regis Group](#), [Steinberg Architects](#), [Sares Regis Group of Northern California](#)

